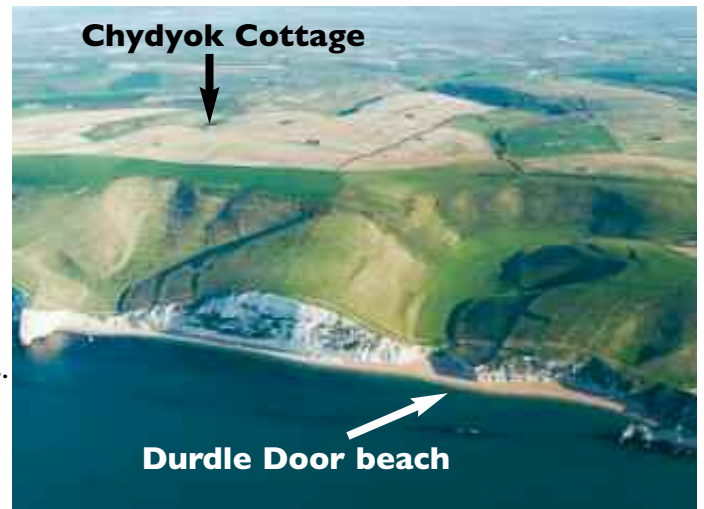


# Chydyok Cottage

Chydyok Cottage is set in a dramatic coastal landscape with rolling chalk downs and easy access to beaches at Durdle Door and Lulworth Cove in the heart of the Jurassic Coast.

This is an ideal holiday location for walkers, cyclists, wildlife enthusiasts, artists, writers and those wishing to find peace and tranquility. Located one mile up a farm track, Chydyok Cottage has direct access to the extensive local network of footpaths and bridleways which cross flower-rich downland with spectacular views. Once the home of Dorset writer Llewelyn Powys and where he socialised with other writers from the Dorset 'Bloomsbury Group'.



## **The configuration of the cottage is as follows:**

The cottage has just been completely refurbished.

### **Downstairs**

Fully equipped kitchen-diner with dining table and chairs, traditional style cupboards, Belfast sink and dishwasher. Sitting room with multi-fuel stove, bookcase, sofa and two armchairs. Please note there is no television reception but we provide a DVD player and TV for watching films. A selection of novels are available to read during your stay. Separate WC and cloakroom.

### **First floor**

Bedroom 1 spacious room with comfortable double bed and view to garden.

Bedroom 2 with two new single beds and view to garden.

Family bathroom with shower, bath, WC and view to garden from the bath!

Duvets and pillows are provided, please bring bed linen and towels.

### **Attic**

Steep steps from bedroom 2 lead to the Writer's Room with desk and occasional bed.

### **Heating**

Heating by electric night storage heaters. Electricity is included in the rental price between April and September and charged at £25 per week during October to March.

Firewood can be purchased at the property per basket. Alternatively, the local garages sell kindling, logs and coal.

### **Outside**

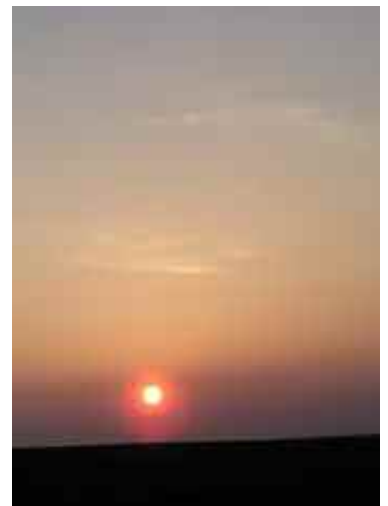
The property has lawned sloping garden to the south side with mature Medlar trees. Small front garden with picnic bench. Small rear paved area with outdoor table and wooden chairs. An outdoor store houses the barbecue.

Chydyok is fantastic for off-road cycling on bridleways. If you are bringing bikes we can provide under cover storage in a barn – with a nearby hose for winter rides!

### **Pets**

You are welcome to bring a well-behaved dog at a charge of £10 per week.

If you wish to bring a horse to Chydyok, please contact us to discuss.



## Location

Two minutes walk up a track reveals stunning views to Portland in the west and Lulworth Cove and beyond to the east - keep walking for another 12 minutes and you are at Durdle Door and its magnificent beach.

Two pubs within 1.5 miles. Village shop 2 miles. Fifteen minute drive to Lulworth Cove, Lulworth Castle, Monkeyworld and Bovington Tank museum. Half hour drive to Corfe Castle, Farmer Palmers, Weymouth, Sealife Centre, Dorchester, Wareham or Thomas Hardy's house (Max Gate) and T E Laurence's house (Clouds Hill) and grave (Morton).



## Booking information

Changeover day is on Friday when the cottage is available for new tenants after 3:00pm. We ask that departing guests have vacated the property by 10:00am. Changeover days may be flexible during the low season so please ask.

Short breaks are available outside of school holidays at a cost of 70% of the weekly fee for up to 3 weekend nights (Friday, Saturday & Sunday) nights or 60% of the weekly fee for up to 4 week nights (Monday, Tuesday, Wednesday & Thursday).

If you are interested in booking a stay at Chydyok, please contact us by telephone (01929 400865) or email ([chydyokcottage@btinternet.com](mailto:chydyokcottage@btinternet.com)) to check availability and we will hold a provisional booking for 10 days after which it will be readvertised. To confirm the booking we will send you (by email or post) a booking form which you need to complete, sign and return together with a deposit of £150. The balance will become due two calendar months before the date of your holiday.

We look forward to hearing from you.

David and Madeleine Simcox  
1 Chydyok Farm  
East Chaldon  
Dorchester  
Dorset  
DT2 8DW

Tel: 01929 400865

Email: [chydyokcottage@btinternet.com](mailto:chydyokcottage@btinternet.com)

