



The Powys Society Newsletter
No 26 November 1995

POWYS

President: Glen Cavaliero

Chairman: Morine Krissdóttir
c/o the Secretary

Vice Chairman: Paul Roberts

Secretary: John Batten

Keeper's Cottage, Montacute, Somerset, TA15 6XN
(tel: 01935 824077)

Treasurer: Stephen Powys Marks
Hamilton's, Kilmersdon, near Bath, Somerset, BA3 5TE
(tel: 01761 435134)

The Powys Society is a registered charity,
number 801332.

The Powys Society Newsletter

The *Newsletter* is published three times a year, in April, July and November. Material for publication should be sent to the editor, to arrive no later than the first day of the month preceding publication. The editor reserves the right to decline material, including letters, submitted for publication.

The views expressed by contributors to the *Newsletter* are their own, and should not be regarded as the official view of The Powys Society.

Editor: Paul Roberts

29 St Mary's Road, Sale, Cheshire M33 6SB
(tel: 0161 969 2103)

Editorial Committee

Morine Krissdóttir, Griffin Beale, Stephen Powys Marks
and Alan Howe

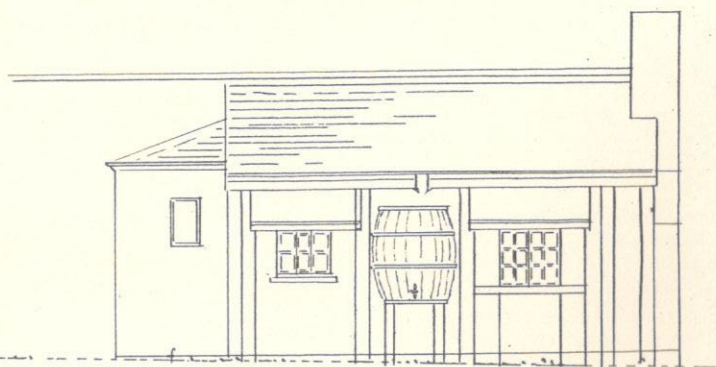
© 1995: copyright is retained by all contributors;
all other material is copyright of The Powys Society,
except where otherwise stated.

On the front cover:

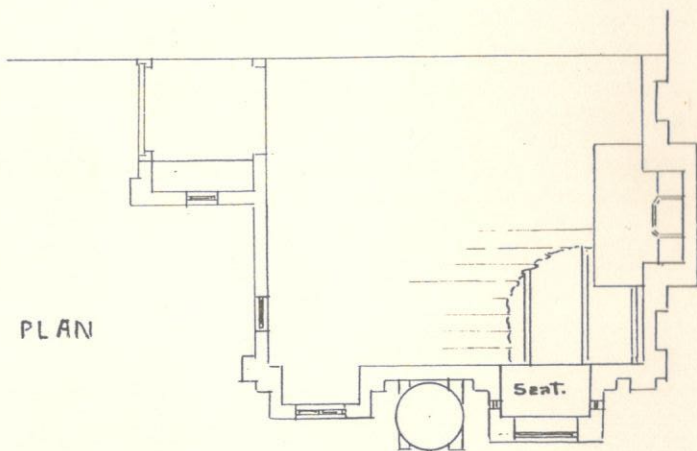
Charles Francis Powys drinking tea
oil painting by Gertrude M. Powys done in about 1920
10½" by 8¼" (see 'A Theft' on page 10).

PROPOSED ALTERATION
FOR THE MABELULU

Scale 4 feet to 1 inch



EAST ELEVATION



PLAN

A. R. Powys

'Proposed alteration for the Mabelulu', a pen sketch (reduced) by A. R. Powys in early 1890s for the 'Mabelulu Castle' of Marian, Bernie and Lulu, the 'noble three' (see page 9 and back cover of Newsletter 15 (April 1992) for a sketch by G. M. Powys of the kitchen garden showing the door of the Mabelulu).